

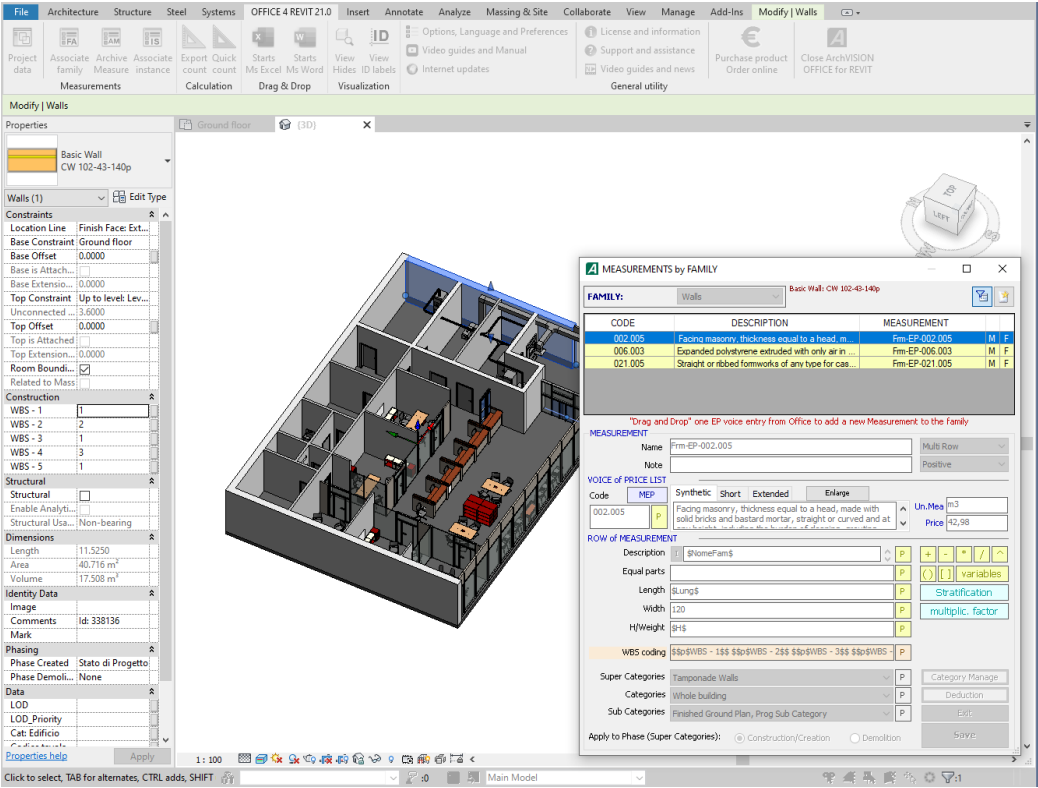


ArchVISION OFFICE for REVIT 22
a BIM solution proposed by MCS Software
for the dynamic quantity take-off between
Revit and Office

Presentation of the main characteristics of the product

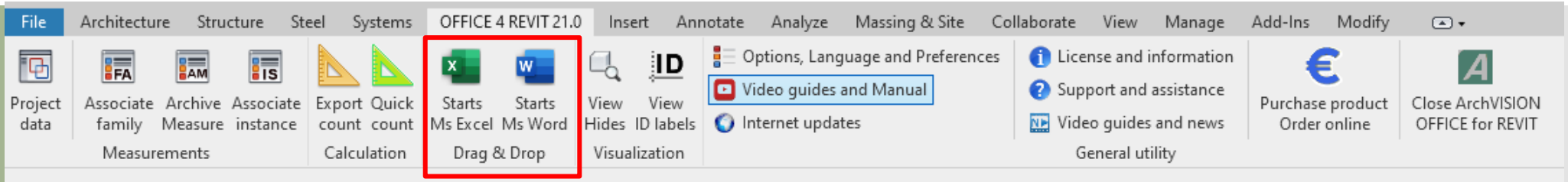
Version updated in April 2021 - ver. 22.0

ArchVISION OFFICE for REVIT is an add-in that integrates and interfaces directly with Autodesk Revit (from 2018 to 2022) and with Microsoft Excel and Word (starting from the 2007 version), putting them in direct communication with each other through a dynamic and bidirectional dialogue between the two products by creating a unique link between one or more PL items (Price List) and families or instances (Autodesk Revit ID), it does not require IFC files, exports or intermediate interchange files, ArchVISION OFFICE for REVIT generates and updates the quantity take-off directly in native XLSX or DOCX format in real time and from Revit with just one click!



| | | | | |
|--|---------|--|------|--------|
| ArchVISION - Example excel price list - Drag the selection in the measurements dialog to associate the values to Families or Instances | | | | |
| | Code | Description | UM | Price |
| 1 | | | | |
| 2 | 002.001 | 25x25x8 cm perforated brick partition and M1 type premixed mortar. Partition thickness 8 cm | m3 | 21.27 |
| 3 | 002.005 | Facing masonry, thickness equal to a head, made with solid bricks and bastard mortar, straight or curved and at any height, including the burden of cleaning, grouting and styling the joints and whatever else is necessary to carry out the work in a workmanlike manner with sandblasted drawn bricks (5x12x25) | m3 | 42.98 |
| 4 | 004.003 | Mixed slab of reinforced concrete and brick cast on site, for flat structures, with Rck 25 N / mm2 concrete, consisting of piginate interspersed between parallel ribs of reinforced conglomerate, including the possible formation of distribution ribs in the floors with spans exceeding 5, 00 m, of joints to support overlying partitions, of flat or flared dovetail bands at the ends of the joints, in addition to the burden of formwork, of temporary support reinforcements for a maximum height of 4.00 m from the floor of support to the intrados of the floor, and everything else necessary to give the floor finished in a workmanlike manner, suitable for the particular use required, excluding only the supply on site of the iron completion reinforcement, with brick consisting of a only element (monoblock) with 4 cm upper concrete slab: for a total height of 28 cm | m3 | 45.24 |
| 5 | 006.003 | Expanded polystyrene extruded with only air in the cells, of dens. not less than 30 kg / m3, homogeneous single layer in class 1: thickness 50 mm | m3 | 25.00 |
| 6 | 007.001 | Raw or rustic plaster, or float, spread by hand and consisting of a first layer of rough coat and a second layer drawn in a rustic trowel, applied with predisposed points and guides, for a thickness of about 20 mm: for exterior on vertical walls: with slaked lime mortar and sand composed of 500 kg of lime for 1.00 m3 of sand | m3 | 8.20 |
| 7 | 007.004 | External civil plaster made with thermal insulating plaster by applying a product based on polystyrene, hydraulic binders and additives, applied by spray, including the sanding and final smoothing with a product based on cement and aggregates: thickness of 3-4 cm. With application of the product in two coats. | m3 | 16.53 |
| 8 | 008.003 | Sound-absorbing interior finishing plaster based on vermiculite and inorganic binders, resins and chemical additives, not containing asbestos or other fibers, applied by spray on brick or concrete substrates, in a thickness of 3 cm. | m3 | 11.78 |
| 9 | 010.002 | Floor of natural satin terracotta, laid fresh on fresh on a bed of sand and cement after dusting with cement type 32.5 with joints connected to white or colored cement, including cuts, scraps, the treatment carried out by thorough washing with buffered acid, subsequent passage of impregnating agent and then spreading of paste wax with dimensions of: 25x25 cm | m2 | 50.95 |
| 10 | 010.003 | Floor of natural satin terracotta, laid fresh on fresh on a bed of sand and cement after dusting with cement type 32.5 with joints connected to white or colored cement, including cuts, scraps, the treatment carried out by thorough washing with buffered acid, subsequent passage of impregnating agent and then spreading of paste wax with dimensions of: 30x30 cm | m2 | 54.54 |
| 11 | 012.004 | Internal wall cladding with single-fired red-paste glazed ceramic tiles, compliant with UNI 759 group BII standards, with smooth or semi-gloss surface applied with suitable glue on prepared substrates, including grouting the joints with suitable waterproofing grouts, final cleaning and the special pieces: 20x20 cm, solid color | m2 | 29.30 |
| 12 | 013.001 | External wooden entrance door, with two or more sills, of any span, consisting of a master frame minimum 13x2 cm fixed to the masonry with sturdy hangers and the framed mobile part (minimum 10x1 cm) and connected by intermediate bands of equal section, veneered on the two sides for a total finished thickness of 4.5 cm with any ashlar panels, included and compensated in the price for internal and external exhibitions, frames, heavy brass hinges, two sturdy posts, safety lock with 3 or more throws, keys, deadbolt, knob and handle in brass or chromed metal, stud covers and anything else necessary to give the work finished in a workmanlike manner, on site excluding painting: Douglas fir | m2 | 269.07 |
| 13 | 013.003 | Internal wooden door with hollow-core movable door and veneered edges, complete with master frame in veneered blockboard with a thickness of 8/11 mm, interlocking plywood casings and all the hardware necessary for fitting, with the exception of the handles and any glass, movement and closure, with standard dimensions of 210 x 60-70-80-90 cm: with plain solid door: natural oak | each | 230.59 |
| 14 | 016.002 | Painting with water-based paint on surfaces with three coats to cover, excluding the preparation of the same on internal surfaces: with breathable water-based paint | m2 | 3.81 |
| 15 | 016.003 | Excavation with forced section, up to a depth of 2 m, including the extraction and anchoring of any water, up to a maximum head of 20 cm, the load on means of transport and the removal of the excavated material up to a maximum of 5000 m: in tuff | m3 | 5.76 |
| 16 | 019.001 | Backfilling with debris coming from excavation, including the approach of the materials, the compacting of the materials used in layers until the existing ground levels are reached and the prescribed compaction, including all charges: | m3 | 1.79 |
| 17 | 021.001 | Steel in bars of the type Fe S 38 S, Fe S 44 S for reinforcement of cement conglomerate including all costs for work and cutting to size, including scraps, shaping and assembly on site in a workmanlike manner with the necessary fastenings | kg | 1.10 |
| 18 | | | | |

Launch functions and interoperability with Excel and Word directly from the Revit ribbon



Association of one or more PL items from any list from Excel or Word file via Drag & Drop directly in Revit with measurements configured on Families, Instances, Materials, Paints, Parts, Masses, Topographic surfaces (excavations and fillings), Nested Families and Groups, allowing the subsequent realization of the quantity take-off directly in Excel or Word with subsequent dynamic and direct updates, also available in Worksharing mode (teamwork on federated and shared projects)

MEASUREMENTS by FAMILY

FAMILY: Walls Basic Wall: CW 102-43-140p

| CODE | DESCRIPTION | MEASUREMENT |
|---------|---|----------------|
| 002.005 | Facing masonry, thickness equal to a head, m | Frm-EP-002.005 |
| 006.003 | Expanded polystyrene extruded with only air in ... | Frm-EP-006.003 |
| 021.005 | Straight or ribbed formworks of any type for cas... | Frm-EP-021.005 |

"Drag and Drop" one EP voice entry from Office to add a new Measurement to the family

MEASUREMENT

Name: Frm-EP-002.005

Note:

VOICE OF PRICE LIST

Code: MEP Synthetic Short Extended Enlarge

002.005 P Facing masonry, thickness equal to a head, made with solid bricks and bastard mortar, straight or curved and at ...

Un.Mea: m3 Price: 42,98

ROW OF MEASUREMENT

Description: \$NomeFam\$

Equal parts: P

Length: \$Lung\$

Width: 120

H/Weight: \$H\$

WBS coding: \$p\$WBS - 1\$ \$p\$WBS - 2\$ \$p\$WBS - 3\$ \$p\$WBS -

Super Categories: Tamponade Walls

Categories: Whole building

Sub Categories: Finished Ground Plan, Prog Sub Category

Apply to Phase (Super Categories): ☒ Construction/Creation ☐ Demolition

Category Manage Deduction Exit Save

ArchVISION - Example excel price list - Drag the selection in the measurements dialog to associate the values to Families or Instances

| Code | Description | UM | Price |
|---------|--|------|--------|
| 002.001 | 25x25x8 cm perforated brick partition and M1 type premixed mortar. Partition thickness 8 cm | m3 | 21.27 |
| 002.005 | Facing masonry, thickness equal to a head, made with solid bricks and bastard mortar, straight or curved and at any height, including the burden of cleaning, grouting and styling the joints and whatever else is necessary to carry out the work in a workmanlike manner with sandblasted drawn bricks (5x12x25) | m3 | 42.98 |
| 004.001 | Mixed slab of reinforced concrete and brick cast on site, for flat structures, with Rik 25 N / mm2 concrete, consisting of pignatte interposed between parallel ribs of forced conglomerate, including the possible formation of distribution ribs in the floors with spans exceeding 5,00 m, of joists to support overlying partitions, and dovetail bands at the ends of the joists, in addition to the burden of formwork, of temporary support reinforcements for a maximum height of 4.00 floor of support to the intrados of the floor, of the stripping, and everything else necessary to give the floor finished in a workmanlike manner, suitable for use required, excluding only the supply on site of the iron completion reinforcements, with brick consisting of a only element (monobloq) with 4 concrete slab: for a total height of 26 cm | m3 | 45.24 |
| 006.003 | Expanded polystyrene extruded with only air in the cells, of dens. not less than 30 kg / m3, homogeneous single layer in class 1: thickness 50 mm | m3 | 25.00 |
| 007.001 | Raw or rustic plaster, or float, spread by hand and consisting of a first layer of rough coat and a second layer drawn in a rustic trowel, applied with predisposed posts and guides, for a thickness of about 20 mm: for exteriors on vertical walls: with slaked lime mortar and sand composed of 500 kg of lime for 1.00 m3 of sand | m3 | 8.20 |
| 007.004 | External civil plaster made with thermal insulating plaster by applying a product based on polystyrene, hydraulic binders and additives, applied by spray, including the sanding and final smoothing with a product based on cement and aggregates, thickness of 3-4 cm. With application of the product in two coats. | m3 | 16.53 |
| 008.003 | Sound-absorbing interior finishing plaster based on vermiculite and inorganic binders, resins and chemical additives, not containing asbestos or other fibers, applied by spray on brick or concrete substrates, in a thickness of 2 cm | m3 | 11.78 |
| 010.002 | Floor of natural satin terracotta, laid fresh on fresh on a bed of sand and cement after dusting with cement type 32.5 with joints connected to white or colored cement, including cuts, scraps, the treatment carried out by thorough washing with buffered acid, subsequent passage of impregnating agent and then spreading of paste wax with dimensions of: 25x25 cm | m2 | 50.95 |
| 010.003 | Floor of natural satin terracotta, laid fresh on fresh on a bed of sand and cement after dusting with cement type 32.5 with joints connected to white or colored cement, including cuts, scraps, the treatment carried out by thorough washing with buffered acid, subsequent passage of impregnating agent and then spreading of paste wax with dimensions of: 30x30 cm | m2 | 54.54 |
| 012.004 | Internal wall cladding with single-fired red-paste glazed ceramic tiles, compliant with UNI 159 group BII standards, with smooth or semi-gloss surface applied with glue on prepared substrates, including grouting the joints with suitable waterproofing grouts, final cleaning and the special pieces: 20x20 cm, solid color | m2 | 29.30 |
| 013.003 | Internal wooden door, with two or more lots, of any span, consisting of a master frame (minimum 12x8 cm) fixed to the masonry with sturdy harpoons and a fixed mobile part (minimum 10x6 cm) and connected by intermediate bands of equal section, veneered on the two sides for a total finished thickness of 4.5 cm with ashlar panels, included and compensated in the price for internal and external exhibitions, frames, heavy brass hinges, two sturdy posts, safety lock with 3 or more throws, key, deadbolt, knob and handle in brass or chromed metal, stud covers and anything else necessary to give the work finished in a workmanlike manner, on site excluding painting: Douglas fir | each | 230.58 |
| 016.002 | Painting with water-based paint on surfaces with three coats to cover, excluding the preparation of the same: on internal surfaces: with breathable water-based paint | m2 | 3.81 |
| 018.003 | Excavation with forced section, up to a depth of 2 m, including the extraction and anchoring of any water, up to a maximum head of 20 cm, the load on means of transport and the removal of the excavated material up to a maximum of 5000 m in luff | m3 | 5.76 |
| 019.001 | Backfilling with debris coming from excavation, including the approach of the materials, the compacting of the materials used in layers until the existing ground levels are reached and the prescribed compaction, including all charges | m3 | 1.79 |
| 021.001 | Steel in bars of the type Fe B 36 X, Fe B 44 K for reinforcement of cement conglomerate including all costs for work and cutting to size, including scraps, shaping and assembly on site in a workmanlike manner with the necessary fastenings | kg | 1.10 |

Price list

MEASUREMENTS by ENTITY (ID: 390149)

ENTITY: Furniture Furniture: Desk Chair

| CODE | DESCRIPTION | MEASUREMENT |
|---------|--------------------------------------|-------------|
| 100.009 | General purpose chairs for customers | |

"Drag and Drop" one EP voice entry from Office to add a new Measurement to the single entity

MEASUREMENT

Name: Multi Row
Note: Positive

VOICE of PRICE LIST

Code: 100.009 Synthetic Short Extended Enlarge
General purpose chairs for customers Un.Meas each Price 45,00

ROW of MEASUREMENT

Description: I P + - * / ^
Equal parts: P
Length: P
Width: P
H/Weight: P
WBS coding: Not Assigned P
Super Categories: None P Category Manage
Categories: None P Deduction
Sub Categories: None P Exit
Apply to Phase (Super Categories): ☒ Construction/Creation ☐ Demolition Save

| | | |
|----|------------|---|
| 34 | 04.10.1972 | Wooden railing made up of worked elements with supports and handrails, including three coats, on |
| 35 | 040.001 | Normal iron profiles (round, flat, square, angular) for railings in normal profiles with straight lines |
| 36 | 040.002 | Normal iron profiles (round, flat, square, angular) for railings in normal profiles with curved lines |
| 37 | 06.08.2005 | Internal wooden staircase |
| 38 | 08.10.1970 | Skirting board in porcelain stoneware made up of strips 25 cm long and 8 cm high. |
| 39 | 100.001 | Internal ATMs for branches complete with labor installation |
| 40 | 100.002 | Entrance door with sensors |
| 41 | 100.003 | Desk for branch operator |
| 42 | 100.004 | Complete workstation for public cashier operator |
| 43 | 100.005 | Partition walls for the public cash desk |
| 44 | 100.006 | Executive table for meeting room |
| 45 | 100.007 | Interior walls mixed plasterboard and semi-transparent glass |
| 46 | 100.008 | Promotional posters for display |
| 47 | 100.009 | General purpose chairs for customers |
| 48 | 100.010 | Medium-sized office cabinet for branch |
| 49 | 100.011 | Large office cabinet for branch |
| 50 | 100.012 | External curtain wall with opaque glazing complete with uprights and assembly |
| 51 | 100.013 | Branch operator chair |
| 52 | 100.014 | Partition doors for internal areas |
| 53 | 100.015 | Chest of drawers for small branch |
| 54 | 100.017 | Magazine table for branch |
| 55 | 100.018 | Complete group of customer waiting area |
| 56 | 100.050 | Cable tray with pegs 100x50 |
| 57 | 100.051 | Horizontal curve cable tray with pegs 100x50 |

The connection between Excel or Word with Revit is dynamic and direct through "Drag & Drop" being able to easily change the cost, descriptions, calculation formulas and also the materials associated with them (Measurements) by updating a quantity take-off in a few seconds with multiple variants and price alternatives by also reading the parameters (type and instance) of the customized families, being able to compute the active selection, it is possible to manage Work Progress Status and simulate different contexts (possibly with calculations also organized by phases, levels, categorizations and Multilevel coding WBS).

ArchVISION OFFICE for REVIT allows the configuration of each measurement for one or more PL entries (Codes) from one or more lists by associating them with the geometries and the Instance and Type parameters in Revit.

FileArchitectureStructureSteelSystemsOFFICE 4 REVIT 21.0InsertAnnotateAnalyzeMassing & SiteCollaborateViewManageAdd-InsModify | Walls

Project data

Associate familyMeasurements

Archive instance

Associate instance

Export countCalculation

Quick count

Starts Ms Excel

Starts Ms Word

View Hides

View ID labels

Options, Language and Preferences

Video guides and Manual

Internet updates

License and information

Support and assistance

Video guides and news

Purchase product

Close ArchVISION

Modify | Walls

Properties

Basic WallCW 102-43-140p

Walls (1)Edit Type

Base is Attach...0.0000

Base Extensio...0.0000

Top ConstraintUp to level: Lev...3.6000

Unconnected...0.0000

Top Offset0.0000

Top is Attached

Top Extension...0.0000

Room Bound...☒

Related to Mass

Construction

WBS - 11

WBS - 22

WBS - 31

WBS - 43

WBS - 51

Structural

Structural☐

Enable Analyti

Structural Usa...Non-bearing

Dimensions

Length11.5250

Area40.716 m²

Volume17.508 m³

Identity Data

Image

CommentsId: 338136

Mark

Phasing

Phase CreatedStato di Progetto

Phase Demoli...None

Data

LOD

LOD_Priority

Cat: Edificio

Codice tavola ...

SbCat: Piano ...Ground floor

Id univoco338136

MEASUREMENTS by FAMILY

FAMILY:WallsBasic Wall: CW 102-43-140p

| CODE | DESCRIPTION | MEASUREMENT | | |
|---------|---|----------------|---|---|
| 002.005 | Facing masonry, thickness equal to a head, m... | Frm-EP-002.005 | M | F |
| 006.003 | Expanded polystyrene extruded with only air in ... | Frm-EP-006.003 | M | F |
| 021.005 | Straight or ribbed formworks of any type for cas... | Frm-EP-021.005 | M | F |

"Drag and Drop" one EP voice entry from Office to add a new Measurement to the family

MEASUREMENT

NameFrm-EP-002.005Multi Row

Note

Positive

VOICE OF PRICE LIST

CodeMEPSyntheticShortExtendedEnlarge

002.005P

Facing masonry, thickness equal to a head, made with solid bricks and bastard mortar, straight or curved and at

Un.Meam³

Price42.98

ROW OF MEASUREMENT

DescriptionI \$NoneFam\$P+ - * / ^

Equal partsP() [] variables

Length\$Lung\$PStratification

Width120Pmultiplic. factor

H/Weight\$H\$P

WBS coding\$Sp\$WBS - 1\$ \$Sp\$WBS - 2\$ \$Sp\$WBS - 3\$ \$Sp\$WBS - 4\$ \$Sp\$WBS - 5\$ \$Sp\$WBS - 6\$ \$Sp\$WBS - 7\$ \$Sp\$WBS - 8\$ \$Sp\$WBS - 9\$ \$Sp\$WBS - 10\$ \$Sp\$WBS - 11\$ \$Sp\$WBS - 12\$ \$Sp\$WBS - 13\$ \$Sp\$WBS - 14\$ \$Sp\$WBS - 15\$ \$Sp\$WBS - 16\$ \$Sp\$WBS - 17\$ \$Sp\$WBS - 18\$ \$Sp\$WBS - 19\$ \$Sp\$WBS - 20\$ \$Sp\$WBS - 21\$ \$Sp\$WBS - 22\$ \$Sp\$WBS - 23\$ \$Sp\$WBS - 24\$ \$Sp\$WBS - 25\$ \$Sp\$WBS - 26\$ \$Sp\$WBS - 27\$ \$Sp\$WBS - 28\$ \$Sp\$WBS - 29\$ \$Sp\$WBS - 30\$ \$Sp\$WBS - 31\$ \$Sp\$WBS - 32\$ \$Sp\$WBS - 33\$ \$Sp\$WBS - 34\$ \$Sp\$WBS - 35\$ \$Sp\$WBS - 36\$ \$Sp\$WBS - 37\$ \$Sp\$WBS - 38\$ \$Sp\$WBS - 39\$ \$Sp\$WBS - 40\$ \$Sp\$WBS - 41\$ \$Sp\$WBS - 42\$ \$Sp\$WBS - 43\$ \$Sp\$WBS - 44\$ \$Sp\$WBS - 45\$ \$Sp\$WBS - 46\$ \$Sp\$WBS - 47\$ \$Sp\$WBS - 48\$ \$Sp\$WBS - 49\$ \$Sp\$WBS - 50\$ \$Sp\$WBS - 51\$ \$Sp\$WBS - 52\$ \$Sp\$WBS - 53\$ \$Sp\$WBS - 54\$ \$Sp\$WBS - 55\$ \$Sp\$WBS - 56\$ \$Sp\$WBS - 57\$ \$Sp\$WBS - 58\$ \$Sp\$WBS - 59\$ \$Sp\$WBS - 60\$ \$Sp\$WBS - 61\$ \$Sp\$WBS - 62\$ \$Sp\$WBS - 63\$ \$Sp\$WBS - 64\$ \$Sp\$WBS - 65\$ \$Sp\$WBS - 66\$ \$Sp\$WBS - 67\$ \$Sp\$WBS - 68\$ \$Sp\$WBS - 69\$ \$Sp\$WBS - 70\$ \$Sp\$WBS - 71\$ \$Sp\$WBS - 72\$ \$Sp\$WBS - 73\$ \$Sp\$WBS - 74\$ \$Sp\$WBS - 75\$ \$Sp\$WBS - 76\$ \$Sp\$WBS - 77\$ \$Sp\$WBS - 78\$ \$Sp\$WBS - 79\$ \$Sp\$WBS - 80\$ \$Sp\$WBS - 81\$ \$Sp\$WBS - 82\$ \$Sp\$WBS - 83\$ \$Sp\$WBS - 84\$ \$Sp\$WBS - 85\$ \$Sp\$WBS - 86\$ \$Sp\$WBS - 87\$ \$Sp\$WBS - 88\$ \$Sp\$WBS - 89\$ \$Sp\$WBS - 90\$ \$Sp\$WBS - 91\$ \$Sp\$WBS - 92\$ \$Sp\$WBS - 93\$ \$Sp\$WBS - 94\$ \$Sp\$WBS - 95\$ \$Sp\$WBS - 96\$ \$Sp\$WBS - 97\$ \$Sp\$WBS - 98\$ \$Sp\$WBS - 99\$ \$Sp\$WBS - 100\$ \$Sp\$WBS - 101\$ \$Sp\$WBS - 102\$ \$Sp\$WBS - 103\$ \$Sp\$WBS - 104\$ \$Sp\$WBS - 105\$ \$Sp\$WBS - 106\$ \$Sp\$WBS - 107\$ \$Sp\$WBS - 108\$ \$Sp\$WBS - 109\$ \$Sp\$WBS - 110\$ \$Sp\$WBS - 111\$ \$Sp\$WBS - 112\$ \$Sp\$WBS - 113\$ \$Sp\$WBS - 114\$ \$Sp\$WBS - 115\$ \$Sp\$WBS - 116\$ \$Sp\$WBS - 117\$ \$Sp\$WBS - 118\$ \$Sp\$WBS - 119\$ \$Sp\$WBS - 120\$ \$Sp\$WBS - 121\$ \$Sp\$WBS - 122\$ \$Sp\$WBS - 123\$ \$Sp\$WBS - 124\$ \$Sp\$WBS - 125\$ \$Sp\$WBS - 126\$ \$Sp\$WBS - 127\$ \$Sp\$WBS - 128\$ \$Sp\$WBS - 129\$ \$Sp\$WBS - 130\$ \$Sp\$WBS - 131\$ \$Sp\$WBS - 132\$ \$Sp\$WBS - 133\$ \$Sp\$WBS - 134\$ \$Sp\$WBS - 135\$ \$Sp\$WBS - 136\$ \$Sp\$WBS - 137\$ \$Sp\$WBS - 138\$ \$Sp\$WBS - 139\$ \$Sp\$WBS - 140\$ \$Sp\$WBS - 141\$ \$Sp\$WBS - 142\$ \$Sp\$WBS - 143\$ \$Sp\$WBS - 144\$ \$Sp\$WBS - 145\$ \$Sp\$WBS - 146\$ \$Sp\$WBS - 147\$ \$Sp\$WBS - 148\$ \$Sp\$WBS - 149\$ \$Sp\$WBS - 150\$ \$Sp\$WBS - 151\$ \$Sp\$WBS - 152\$ \$Sp\$WBS - 153\$ \$Sp\$WBS - 154\$ \$Sp\$WBS - 155\$ \$Sp\$WBS - 156\$ \$Sp\$WBS - 157\$ \$Sp\$WBS - 158\$ \$Sp\$WBS - 159\$ \$Sp\$WBS - 160\$ \$Sp\$WBS - 161\$ \$Sp\$WBS - 162\$ \$Sp\$WBS - 163\$ \$Sp\$WBS - 164\$ \$Sp\$WBS - 165\$ \$Sp\$WBS - 166\$ \$Sp\$WBS - 167\$ \$Sp\$WBS - 168\$ \$Sp\$WBS - 169\$ \$Sp\$WBS - 170\$ \$Sp\$WBS - 171\$ \$Sp\$WBS - 172\$ \$Sp\$WBS - 173\$ \$Sp\$WBS - 174\$ \$Sp\$WBS - 175\$ \$Sp\$WBS - 176\$ \$Sp\$WBS - 177\$ \$Sp\$WBS - 178\$ \$Sp\$WBS - 179\$ \$Sp\$WBS - 180\$ \$Sp\$WBS - 181\$ \$Sp\$WBS - 182\$ \$Sp\$WBS - 183\$ \$Sp\$WBS - 184\$ \$Sp\$WBS - 185\$ \$Sp\$WBS - 186\$ \$Sp\$WBS - 187\$ \$Sp\$WBS - 188\$ \$Sp\$WBS - 189\$ \$Sp\$WBS - 190\$ \$Sp\$WBS - 191\$ \$Sp\$WBS - 192\$ \$Sp\$WBS - 193\$ \$Sp\$WBS - 194\$ \$Sp\$WBS - 195\$ \$Sp\$WBS - 196\$ \$Sp\$WBS - 197\$ \$Sp\$WBS - 198\$ \$Sp\$WBS - 199\$ \$Sp\$WBS - 200\$ \$Sp\$WBS - 201\$ \$Sp\$WBS - 202\$ \$Sp\$WBS - 203\$ \$Sp\$WBS - 204\$ \$Sp\$WBS - 205\$ \$Sp\$WBS - 206\$ \$Sp\$WBS - 207\$ \$Sp\$WBS - 208\$ \$Sp\$WBS - 209\$ \$Sp\$WBS - 210\$ \$Sp\$WBS - 211\$ \$Sp\$WBS - 212\$ \$Sp\$WBS - 213\$ \$Sp\$WBS - 214\$ \$Sp\$WBS - 215\$ \$Sp\$WBS - 216\$ \$Sp\$WBS - 217\$ \$Sp\$WBS - 218\$ \$Sp\$WBS - 219\$ \$Sp\$WBS - 220\$ \$Sp\$WBS - 221\$ \$Sp\$WBS - 222\$ \$Sp\$WBS - 223\$ \$Sp\$WBS - 224\$ \$Sp\$WBS - 225\$ \$Sp\$WBS - 226\$ \$Sp\$WBS - 227\$ \$Sp\$WBS - 228\$ \$Sp\$WBS - 229\$ \$Sp\$WBS - 230\$ \$Sp\$WBS - 231\$ \$Sp\$WBS - 232\$ \$Sp\$WBS - 233\$ \$Sp\$WBS - 234\$ \$Sp\$WBS - 235\$ \$Sp\$WBS - 236\$ \$Sp\$WBS - 237\$ \$Sp\$WBS - 238\$ \$Sp\$WBS - 239\$ \$Sp\$WBS - 240\$ \$Sp\$WBS - 241\$ \$Sp\$WBS - 242\$ \$Sp\$WBS - 243\$ \$Sp\$WBS - 244\$ \$Sp\$WBS - 245\$ \$Sp\$WBS - 246\$ \$Sp\$WBS - 247\$ \$Sp\$WBS - 248\$ \$Sp\$WBS - 249\$ \$Sp\$WBS - 250\$ \$Sp\$WBS - 251\$ \$Sp\$WBS - 252\$ \$Sp\$WBS - 253\$ \$Sp\$WBS - 254\$ \$Sp\$WBS - 255\$ \$Sp\$WBS - 256\$ \$Sp\$WBS - 257\$ \$Sp\$WBS - 258\$ \$Sp\$WBS - 259\$ \$Sp\$WBS - 260\$ \$Sp\$WBS - 261\$ \$Sp\$WBS - 262\$ \$Sp\$WBS - 263\$ \$Sp\$WBS - 264\$ \$Sp\$WBS - 265\$ \$Sp\$WBS - 266\$ \$Sp\$WBS - 267\$ \$Sp\$WBS - 268\$ \$Sp\$WBS - 269\$ \$Sp\$WBS - 270\$ \$Sp\$WBS - 271\$ \$Sp\$WBS - 272\$ \$Sp\$WBS - 273\$ \$Sp\$WBS - 274\$ \$Sp\$WBS - 275\$ \$Sp\$WBS - 276\$ \$Sp\$WBS - 277\$ \$Sp\$WBS - 278\$ \$Sp\$WBS - 279\$ \$Sp\$WBS - 280\$ \$Sp\$WBS - 281\$ \$Sp\$WBS - 282\$ \$Sp\$WBS - 283\$ \$Sp\$WBS - 284\$ \$Sp\$WBS - 285\$ \$Sp\$WBS - 286\$ \$Sp\$WBS - 287\$ \$Sp\$WBS - 288\$ \$Sp\$WBS - 289\$ \$Sp\$WBS - 290\$ \$Sp\$WBS - 291\$ \$Sp\$WBS - 292\$ \$Sp\$WBS - 293\$ \$Sp\$WBS - 294\$ \$Sp\$WBS - 295\$ \$Sp\$WBS - 296\$ \$Sp\$WBS - 297\$ \$Sp\$WBS - 298\$ \$Sp\$WBS - 299\$ \$Sp\$WBS - 300\$ \$Sp\$WBS - 301\$ \$Sp\$WBS - 302\$ \$Sp\$WBS - 303\$ \$Sp\$WBS - 304\$ \$Sp\$WBS - 305\$ \$Sp\$WBS - 306\$ \$Sp\$WBS - 307\$ \$Sp\$WBS - 308\$ \$Sp\$WBS - 309\$ \$Sp\$WBS - 310\$ \$Sp\$WBS - 311\$ \$Sp\$WBS - 312\$ \$Sp\$WBS - 313\$ \$Sp\$WBS - 314\$ \$Sp\$WBS - 315\$ \$Sp\$WBS - 316\$ \$Sp\$WBS - 317\$ \$Sp\$WBS - 318\$ \$Sp\$WBS - 319\$ \$Sp\$WBS - 320\$ \$Sp\$WBS - 321\$ \$Sp\$WBS - 322\$ \$Sp\$WBS - 323\$ \$Sp\$WBS - 324\$ \$Sp\$WBS - 325\$ \$Sp\$WBS - 326\$ \$Sp\$WBS - 327\$ \$Sp\$WBS - 328\$ \$Sp\$WBS - 329\$ \$Sp\$WBS - 330\$ \$Sp\$WBS - 331\$ \$Sp\$WBS - 332\$ \$Sp\$WBS - 333\$ \$Sp\$WBS - 334\$ \$Sp\$WBS - 335\$ \$Sp\$WBS - 336\$ \$Sp\$WBS - 337\$ \$Sp\$WBS - 338\$ \$Sp\$WBS - 339\$ \$Sp\$WBS - 340\$ \$Sp\$WBS - 341\$ \$Sp\$WBS - 342\$ \$Sp\$WBS - 343\$ \$Sp\$WBS - 344\$ \$Sp\$WBS - 345\$ \$Sp\$WBS - 346\$ \$Sp\$WBS - 347\$ \$Sp\$WBS - 348\$ \$Sp\$WBS - 349\$ \$Sp\$WBS - 350\$ \$Sp\$WBS - 351\$ \$Sp\$WBS - 352\$ \$Sp\$WBS - 353\$ \$Sp\$WBS - 354\$ \$Sp\$WBS - 355\$ \$Sp\$WBS - 356\$ \$Sp\$WBS - 357\$ \$Sp\$WBS - 358\$ \$Sp\$WBS - 359\$ \$Sp\$WBS - 360\$ \$Sp\$WBS - 361\$ \$Sp\$WBS - 362\$ \$Sp\$WBS - 363\$ \$Sp\$WBS - 364\$ \$Sp\$WBS - 365\$ \$Sp\$WBS - 366\$ \$Sp\$WBS - 367\$ \$Sp\$WBS - 368\$ \$Sp\$WBS - 369\$ \$Sp\$WBS - 370\$ \$Sp\$WBS - 371\$ \$Sp\$WBS - 372\$ \$Sp\$WBS - 373\$ \$Sp\$WBS - 374\$ \$Sp\$WBS - 375\$ \$Sp\$WBS - 376\$ \$Sp\$WBS - 377\$ \$Sp\$WBS - 378\$ \$Sp\$WBS - 379\$ \$Sp\$WBS - 380\$ \$Sp\$WBS - 381\$ \$Sp\$WBS - 382\$ \$Sp\$WBS - 383\$ \$Sp\$WBS - 384\$ \$Sp\$WBS - 385\$ \$Sp\$WBS - 386\$ \$Sp\$WBS - 387\$ \$Sp\$WBS - 388\$ \$Sp\$WBS - 389\$ \$Sp\$WBS - 390\$ \$Sp\$WBS - 391\$ \$Sp\$WBS - 392\$ \$Sp\$WBS - 393\$ \$Sp\$WBS - 394\$ \$Sp\$WBS - 395\$ \$Sp\$WBS - 396\$ \$Sp\$WBS - 397\$ \$Sp\$WBS - 398\$ \$Sp\$WBS - 399\$ \$Sp\$WBS - 400\$ \$Sp\$WBS - 401\$ \$Sp\$WBS - 402\$ \$Sp\$WBS - 403\$ \$Sp\$WBS - 404\$ \$Sp\$WBS - 405\$ \$Sp\$WBS - 406\$ \$Sp\$WBS - 407\$ \$Sp\$WBS - 408\$ \$Sp\$WBS - 409\$ \$Sp\$WBS - 410\$ \$Sp\$WBS - 411\$ \$Sp\$WBS - 412\$ \$Sp\$WBS - 413\$ \$Sp\$WBS - 414\$ \$Sp\$WBS - 415\$ \$Sp\$WBS - 416\$ \$Sp\$WBS - 417\$ \$Sp\$WBS - 418\$ \$Sp\$WBS - 419\$ \$Sp\$WBS - 420\$ \$Sp\$WBS - 421\$ \$Sp\$WBS - 422\$ \$Sp\$WBS - 423\$ \$Sp\$WBS - 424\$ \$Sp\$WBS - 425\$ \$Sp\$WBS - 426\$ \$Sp\$WBS - 427\$ \$Sp\$WBS - 428\$ \$Sp\$WBS - 429\$ \$Sp\$WBS - 430\$ \$Sp\$WBS - 431\$ \$Sp\$WBS - 432\$ \$Sp\$WBS - 433\$ \$Sp\$WBS - 434\$ \$Sp\$WBS - 435\$ \$Sp\$WBS - 436\$ \$Sp\$WBS - 437\$ \$Sp\$WBS - 438\$ \$Sp\$WBS - 439\$ \$Sp\$WBS - 440\$ \$Sp\$WBS - 441\$ \$Sp\$WBS - 442\$ \$Sp\$WBS - 443\$ \$Sp\$WBS - 444\$ \$Sp\$WBS - 445\$ \$Sp\$WBS - 446\$ \$Sp\$WBS - 447\$ \$Sp\$WBS - 448\$ \$Sp\$WBS - 449\$ \$Sp\$WBS - 450\$ \$Sp\$WBS - 451\$ \$Sp\$WBS - 452\$ \$Sp\$WBS - 453\$ \$Sp\$WBS - 454\$ \$Sp\$WBS - 455\$ \$Sp\$WBS - 456\$ \$Sp\$WBS - 457\$ \$Sp\$WBS - 458\$ \$Sp\$WBS - 459\$ \$Sp\$WBS - 460\$ \$Sp\$WBS - 461\$ \$Sp\$WBS - 462\$ \$Sp\$WBS - 463\$ \$Sp\$WBS - 464\$ \$Sp\$WBS - 465\$ \$Sp\$WBS - 466\$ \$Sp\$WBS - 467\$ \$Sp\$WBS - 468\$ \$Sp\$WBS - 469\$ \$Sp\$WBS - 470\$ \$Sp\$WBS - 471\$ \$Sp\$WBS - 472\$ \$Sp\$WBS - 473\$ \$Sp\$WBS - 474\$ \$Sp\$WBS - 475\$ \$Sp\$WBS - 476\$ \$Sp\$WBS - 477\$ \$Sp\$WBS - 478\$ \$Sp\$WBS - 479\$ \$Sp\$WBS - 480\$ \$Sp\$WBS - 481\$ \$Sp\$WBS - 482\$ \$Sp\$WBS - 483\$ \$Sp\$WBS - 484\$ \$Sp\$WBS - 485\$ \$Sp\$WBS - 486\$ \$Sp\$WBS - 487\$ \$Sp\$WBS - 488\$ \$Sp\$WBS - 489\$ \$Sp\$WBS - 490\$ \$Sp\$WBS - 491\$ \$Sp\$WBS - 492\$ \$Sp\$WBS - 493\$ \$Sp\$WBS - 494\$ \$Sp\$WBS - 495\$ \$Sp\$WBS - 496\$ \$Sp\$WBS - 497\$ \$Sp\$WBS - 498\$ \$Sp\$WBS - 499\$ \$Sp\$WBS - 500\$ \$Sp\$WBS - 501\$ \$Sp\$WBS - 502\$ \$Sp\$WBS - 503\$ \$Sp\$WBS - 504\$ \$Sp\$WBS - 505\$ \$Sp\$WBS - 506\$ \$Sp\$WBS - 507\$ \$Sp\$WBS - 508\$ \$Sp\$WBS - 509\$ \$Sp\$WBS - 510\$ \$Sp\$WBS - 511\$ \$Sp\$WBS - 512\$ \$Sp\$WBS - 513\$ \$Sp\$WBS - 514\$ \$Sp\$WBS - 515\$ \$Sp\$WBS - 516\$ \$Sp\$WBS - 517\$ \$Sp\$WBS - 518\$ \$Sp\$WBS - 519\$ \$Sp\$WBS - 520\$ \$Sp\$WBS - 521\$ \$Sp\$WBS - 522\$ \$Sp\$WBS - 523\$ \$Sp\$WBS - 524\$ \$Sp\$WBS - 525\$ \$Sp\$WBS - 526\$ \$Sp\$WBS - 527\$ \$Sp\$WBS - 528\$ \$Sp\$WBS - 529\$ \$Sp\$WBS - 530\$ \$Sp\$WBS - 531\$ \$Sp\$WBS - 532\$ \$Sp\$WBS - 533\$ \$Sp\$WBS - 534\$ \$Sp\$WBS - 535\$ \$Sp\$WBS - 536\$ \$Sp\$WBS - 537\$ \$Sp\$WBS - 538\$ \$Sp\$WBS - 539\$ \$Sp\$WBS - 540\$ \$Sp\$WBS - 541\$ \$Sp\$WBS - 542\$ \$Sp\$WBS - 543\$ \$Sp\$WBS - 544\$ \$Sp\$WBS - 545\$ \$Sp\$WBS - 546\$ \$Sp\$WBS - 547\$ \$Sp\$WBS - 548\$ \$Sp\$WBS - 549\$ \$Sp\$WBS - 550\$ \$Sp\$WBS - 551\$ \$Sp\$WBS - 552\$ \$Sp\$WBS - 553\$ \$Sp\$WBS - 554\$ \$Sp\$WBS - 555\$ \$Sp\$WBS - 556\$ \$Sp\$WBS - 557\$ \$Sp\$WBS - 558\$ \$Sp\$WBS - 559\$ \$Sp\$WBS - 560\$ \$Sp\$WBS - 561\$ \$Sp\$WBS - 562\$ \$Sp\$WBS - 563\$ \$Sp\$WBS - 564\$ \$Sp\$WBS - 565\$ \$Sp\$WBS - 566\$ \$Sp\$WBS - 567\$ \$Sp\$WBS - 568\$ \$Sp\$WBS - 569\$ \$Sp\$WBS - 570\$ \$Sp\$WBS - 571\$ \$Sp\$WBS - 572\$ \$Sp\$WBS - 573\$ \$Sp\$WBS - 574\$ \$Sp\$WBS - 575\$ \$Sp\$WBS - 576\$ \$Sp\$WBS - 577\$ \$Sp\$WBS - 578\$ \$Sp\$WBS - 579\$ \$Sp\$WBS - 580\$ \$Sp\$WBS - 581\$ \$Sp\$WBS - 582\$ \$Sp\$WBS - 583\$ \$Sp\$WBS - 584\$ \$Sp\$WBS - 585\$ \$Sp\$WBS - 586\$ \$Sp\$WBS - 587\$ \$Sp\$WBS - 588\$ \$Sp\$WBS - 589\$ \$Sp\$WBS - 590\$ \$Sp\$WBS - 591\$ \$Sp\$WBS - 592\$ \$Sp\$WBS - 593\$ \$Sp\$WBS - 594\$ \$Sp\$WBS - 595\$ \$Sp\$WBS - 596\$ \$Sp\$WBS - 597\$ \$Sp\$WBS - 598\$ \$Sp\$WBS - 599\$ \$Sp\$WBS - 600\$ \$Sp\$WBS - 601\$ \$Sp\$WBS - 602\$ \$Sp\$WBS - 603\$ \$Sp\$WBS - 604\$ \$Sp\$WBS - 605\$ \$Sp\$WBS - 606\$ \$Sp\$WBS - 607\$ \$Sp\$WBS - 608\$ \$Sp\$WBS - 609\$ \$Sp\$WBS - 610\$ \$Sp\$WBS - 611\$ \$Sp\$WBS - 612\$ \$Sp\$WBS - 613\$ \$Sp\$WBS - 614\$ \$Sp\$WBS - 615\$ \$Sp\$WBS - 616\$ \$Sp\$WBS - 617\$ \$Sp\$WBS - 618\$ \$Sp\$WBS - 619\$ \$Sp\$WBS - 620\$ \$Sp\$WBS - 621\$ \$Sp\$WBS - 622\$ \$Sp\$WBS - 623\$ \$Sp\$WBS - 624\$ \$Sp\$WBS - 625\$ \$Sp\$WBS - 626\$ \$Sp\$WBS - 627\$ \$Sp\$WBS - 628\$ \$Sp\$WBS - 629\$ \$Sp\$WBS - 630\$ \$Sp\$WBS - 631\$ \$Sp\$WBS - 632\$ \$Sp\$WBS - 633\$ \$Sp\$WBS - 634\$ \$Sp\$WBS - 635\$ \$Sp\$WBS - 636\$ \$Sp\$WBS - 637\$ \$Sp\$WBS - 638\$ \$Sp\$WBS - 639\$ \$Sp\$WBS - 640\$ \$Sp\$WBS - 641\$ \$Sp\$WBS - 642\$ \$Sp\$WBS - 643\$ \$Sp\$WBS - 644\$ \$Sp\$WBS - 645\$ \$Sp\$WBS - 646\$ \$Sp\$WBS - 647\$ \$Sp\$WBS - 648\$ \$Sp\$WBS - 649\$ \$Sp\$WBS - 650\$ \$Sp\$WBS - 651\$ \$Sp\$WBS - 652\$ \$Sp\$WBS - 653\$ \$Sp\$WBS - 654\$ \$Sp\$WBS - 655\$ \$Sp\$WBS - 656\$ \$Sp\$WBS - 657\$ \$Sp\$WBS - 658\$ \$Sp\$WBS - 659\$ \$Sp\$WBS - 660\$ \$Sp\$WBS - 661\$ \$Sp\$WBS - 662\$ \$Sp\$WBS - 663\$ \$Sp\$WBS - 664\$ \$Sp\$WBS - 665\$ \$Sp\$WBS - 666\$ \$Sp\$WBS - 667\$ \$Sp\$WBS - 668\$ \$Sp\$WBS - 669\$ \$Sp\$WBS - 670\$ \$Sp\$WBS - 671\$ \$Sp\$WBS - 672\$ \$Sp\$WBS - 673\$ \$Sp\$WBS - 674\$ \$Sp\$WBS - 675\$ \$Sp\$WBS - 676\$ \$Sp\$WBS - 677\$ \$Sp\$WBS - 678\$ \$Sp\$WBS - 679\$ \$Sp\$WBS - 680\$ \$Sp\$WBS - 681\$ \$Sp\$WBS - 682\$ \$Sp\$WBS - 683\$ \$Sp\$WBS - 684\$ \$Sp\$WBS - 685\$ \$Sp\$WBS - 686\$ \$Sp\$WBS - 687\$ \$Sp\$WBS - 688\$ \$Sp\$WBS - 689\$ \$Sp\$WBS - 690\$ \$Sp\$WBS - 691\$ \$Sp\$WBS - 692\$ \$Sp\$WBS - 693\$ \$Sp\$WBS - 694\$ \$Sp\$WBS - 695\$ \$Sp\$WBS - 696\$ \$Sp\$WBS - 697\$ \$Sp\$WBS - 698\$ \$Sp\$WBS - 699\$ \$Sp\$WBS - 700\$ \$Sp\$WBS - 701\$ \$Sp\$WBS - 702\$ \$Sp\$WBS - 703\$ \$Sp\$WBS - 704\$ \$Sp\$WBS - 705\$ \$Sp\$WBS - 706\$ \$Sp\$WBS - 707\$ \$Sp\$WBS - 708\$ \$Sp\$WBS - 709\$ \$Sp\$WBS - 710\$ \$Sp\$WBS - 711\$ \$Sp\$WBS - 712\$ \$Sp\$WBS - 713\$ \$Sp\$WBS - 714\$ \$Sp\$WBS - 715\$ \$Sp\$WBS - 716\$ \$Sp\$WBS - 717\$ \$Sp\$WBS - 718\$ \$Sp\$WBS - 719\$ \$Sp\$WBS - 720\$ \$Sp\$WBS - 721\$ \$Sp\$WBS - 722\$ \$Sp\$WBS - 723\$ \$Sp\$WBS - 724\$ \$Sp\$WBS - 725\$ \$Sp\$WBS - 726\$ \$Sp\$WBS - 727\$ \$Sp\$WBS - 728\$ \$Sp\$WBS - 729\$ \$Sp\$WBS - 730\$ \$Sp\$WBS - 731\$ \$Sp\$WBS - 732\$ \$Sp\$WBS - 733\$ \$Sp\$WBS - 734\$ \$Sp\$WBS - 735\$ \$Sp\$WBS - 736\$ \$Sp\$WBS - 737\$ \$Sp\$WBS - 738\$ \$Sp\$WBS - 739\$ \$Sp\$WBS - 740\$ \$Sp\$WBS - 741\$ \$Sp\$WBS - 742\$ \$Sp\$WBS - 743\$ \$Sp\$WBS - 744\$ \$Sp\$WBS - 745\$ \$Sp\$WBS - 746\$ \$Sp\$WBS - 747\$ \$Sp\$WBS - 748\$ \$Sp\$WBS - 749\$ \$Sp\$WBS - 750\$ \$Sp\$WBS - 751\$ \$Sp\$WBS - 752\$ \$Sp\$WBS - 753\$ \$Sp\$WBS - 754\$ \$Sp\$WBS - 755\$ \$Sp\$WBS - 756\$ \$Sp\$WBS - 757\$ \$Sp\$WBS - 758\$ \$Sp\$WBS - 759\$ \$Sp\$WBS - 760\$ \$Sp\$WBS - 761\$ \$Sp\$WBS - 762\$ \$Sp\$WBS - 763\$ \$Sp\$WBS - 764\$ \$Sp\$WBS - 765\$ \$Sp\$WBS - 766\$ \$Sp\$WBS - 767\$ \$Sp\$WBS - 768\$ \$Sp\$WBS - 769\$ \$Sp\$WBS - 770\$ \$Sp\$WBS - 771\$ \$Sp\$WBS - 772\$ \$Sp\$WBS - 773\$ \$Sp\$WBS - 774\$ \$Sp\$WBS - 775\$ \$Sp\$WBS - 776\$ \$Sp\$WBS - 777\$ \$Sp\$WBS - 778\$ \$Sp\$WBS - 779\$ \$Sp\$WBS - 780\$ \$Sp\$WBS - 781\$ \$Sp\$WBS - 782\$ \$Sp\$WBS - 783\$ \$Sp\$WBS - 784\$ \$Sp\$WBS - 785\$ \$Sp\$WBS - 786\$ \$Sp\$WBS - 787\$ \$Sp\$WBS - 788\$ \$Sp\$WBS - 789\$ \$Sp\$WBS - 790\$ \$Sp\$WBS - 791\$ \$Sp\$WBS - 792\$ \$Sp\$WBS - 793\$ \$Sp\$WBS - 794\$ \$Sp\$WBS - 795\$ \$Sp\$WBS - 796\$ \$Sp\$WBS - 797\$ \$Sp\$WBS - 798\$ \$Sp\$WBS - 799\$ \$Sp\$WBS - 800\$ \$Sp\$WBS - 801\$ \$Sp\$WBS - 802\$ \$Sp\$WBS - 803\$ \$Sp\$WBS - 804\$ \$Sp\$WBS - 805\$ \$Sp\$WBS - 806\$ \$Sp\$WBS - 807\$ \$Sp\$WBS - 808\$ \$Sp\$WBS - 809\$ \$Sp\$WBS - 810\$ \$Sp\$WBS - 811\$ \$Sp\$WBS - 812\$ \$Sp\$WBS - 813\$ \$Sp\$WBS - 814\$ \$Sp\$WBS - 815\$ \$Sp\$WBS - 816\$ \$Sp\$WBS - 817\$ \$Sp\$WBS - 818\$ \$Sp\$WBS - 819\$ \$Sp\$WBS - 820\$ \$Sp\$WBS - 821\$ \$Sp\$WBS - 822\$ \$Sp\$WBS - 823\$ \$Sp\$WBS - 824\$ \$Sp\$WBS - 825\$ \$Sp\$WBS - 826\$ \$Sp\$WBS - 827\$ \$Sp\$WBS - 828\$ \$Sp\$WBS - 829\$ \$Sp\$WBS - 830\$ \$Sp\$WBS - 831\$ \$Sp\$WBS - 832\$ \$Sp\$WBS - 833\$ \$Sp\$WBS - 834\$ \$Sp\$WBS - 835\$ \$Sp\$WBS - 836\$ \$Sp\$WBS - 837\$ \$Sp\$WBS - 838\$ \$Sp\$WBS - 839\$ \$Sp\$WBS - 840\$ \$Sp\$WBS - 841\$ \$Sp\$WBS - 842\$ \$Sp\$WBS - 843\$ \$Sp\$WBS - 844\$ \$Sp\$WBS - 845\$ \$Sp\$WBS - 846\$ \$Sp\$WBS - 847\$ \$Sp\$WBS - 848\$ \$Sp\$WBS - 849\$ \$Sp\$WBS - 850\$ \$Sp\$WBS - 851\$ \$Sp\$WBS - 852\$ \$Sp\$WBS - 853\$ \$Sp\$WBS - 854\$ \$Sp\$WBS - 855\$ \$Sp\$WBS - 856\$ \$Sp\$WBS - 857\$ \$Sp\$WBS - 858\$ \$Sp\$WBS - 859\$ \$Sp\$WBS - 860\$ \$Sp\$WBS - 861\$ \$Sp\$WBS - 862\$ \$Sp\$WBS - 863\$ \$Sp\$WBS - 864\$ \$Sp\$WBS - 865\$ \$Sp\$WBS - 866\$ \$Sp\$WBS - 867\$ \$Sp\$WBS - 868\$ \$Sp\$WBS - 869\$ \$Sp\$WBS - 870\$ \$Sp\$WBS - 871\$ \$Sp\$WBS - 872\$ \$Sp\$WBS - 873\$ \$Sp\$WBS - 874\$ \$Sp\$WBS - 875\$ \$Sp\$WBS - 876\$ \$Sp\$WBS - 877\$ \$Sp\$WBS - 878\$ \$Sp\$WBS - 879\$ \$Sp\$WBS - 880\$ \$Sp\$WBS - 881\$ \$Sp\$WBS - 882\$ \$Sp\$WBS - 883\$ \$Sp\$WBS - 884\$ \$Sp\$WBS - 885\$ \$Sp\$WBS - 886\$ \$Sp\$WBS - 887\$ \$Sp\$WBS - 888\$ \$Sp\$WBS - 889\$ \$Sp\$WBS - 890\$ \$Sp\$WBS - 891\$ \$Sp\$WBS - 892\$ \$Sp\$WBS - 893\$ \$Sp\$WBS - 894\$ \$Sp\$WBS - 895\$ \$Sp\$WBS - 896\$ \$Sp\$WBS - 897\$ \$Sp\$WBS - 898\$ \$Sp\$WBS - 899\$ \$Sp\$WBS - 900\$ \$Sp\$WBS - 901\$ \$Sp\$WBS - 902\$ \$Sp\$WBS - 903\$ \$Sp\$WBS - 904\$ \$Sp\$WBS - 905\$ \$Sp\$WBS - 906\$ \$Sp\$WBS - 907\$ \$Sp\$WBS - 908\$ \$Sp\$WBS - 909\$ \$Sp\$WBS - 910\$ \$Sp\$WBS - 911\$ \$Sp\$WBS - 912\$ \$Sp\$WBS - 913\$ \$Sp\$WBS - 914\$ \$Sp\$WBS - 915\$ \$Sp\$WBS - 916\$ \$Sp\$WBS - 917\$ \$Sp\$WBS - 918\$ \$Sp\$WBS - 919\$ \$Sp\$WBS - 920\$ \$Sp\$WBS - 921\$ \$Sp\$WBS - 922\$ \$Sp\$WBS - 923\$ \$Sp\$WBS - 924\$ \$Sp\$WBS - 925\$ \$Sp\$WBS - 926\$ \$Sp\$WBS - 927\$ \$Sp\$WBS - 928\$ \$Sp\$WBS - 929\$ \$Sp\$WBS - 930\$ \$Sp\$WBS - 931\$ \$Sp\$WBS - 932\$ \$Sp\$WBS - 933\$ \$Sp\$WBS - 934\$ \$Sp\$WBS - 935\$ \$Sp\$WBS - 936\$ \$Sp\$WBS - 937\$ \$Sp\$WBS - 938\$ \$Sp\$WBS - 939\$ \$Sp\$WBS - 940\$ \$Sp\$WBS - 941\$ \$Sp\$WBS - 942\$ \$Sp\$WBS - 943\$ \$Sp\$WBS - 944\$ \$Sp\$WBS - 945\$ \$Sp\$WBS - 946\$ \$Sp\$WBS - 947\$ \$Sp\$WBS - 948\$ \$Sp\$WBS - 949\$ \$Sp\$WBS - 950\$ \$Sp\$WBS - 951\$ \$Sp\$WBS - 952\$ \$Sp\$WBS - 953\$ \$Sp\$WBS - 954\$ \$Sp\$WBS - 955\$ \$Sp\$WBS - 956\$ \$Sp\$WBS - 957\$ \$Sp\$WBS - 958\$ \$Sp\$WBS - 959\$ \$Sp\$WBS - 960\$ \$Sp\$WBS - 961\$ \$Sp\$WBS - 962\$ \$Sp\$WBS - 963\$ \$Sp\$WBS - 964\$ \$Sp\$WBS - 965\$ \$Sp\$WBS - 966\$ \$Sp\$WBS - 967\$ \$Sp\$WBS - 968\$ \$Sp\$WBS - 969\$ \$Sp\$WBS - 970\$ \$Sp\$WBS - 971\$ \$Sp\$WBS - 972\$ \$Sp\$WBS - 973\$ \$Sp\$WBS - 974\$ \$Sp\$WBS - 975\$ \$Sp\$WBS - 976\$ \$Sp\$WBS - 977\$ \$Sp\$WBS - 978\$ \$Sp\$WBS - 979\$ \$Sp\$WBS - 980\$ \$Sp\$WBS - 981\$ \$Sp\$WBS - 982\$ \$Sp\$WBS - 983\$ \$Sp\$WBS - 984\$ \$Sp\$WBS - 985\$ \$Sp\$WBS - 986\$ \$Sp\$WBS - 987\$ \$Sp\$WBS - 988\$ \$Sp\$WBS - 989\$ \$Sp\$WBS - 990\$ \$Sp\$WBS - 991\$ \$Sp\$WBS - 992\$ \$Sp\$WBS - 993\$ \$Sp\$WBS - 994\$ \$Sp\$WBS - 995\$ \$Sp\$WBS - 996\$ \$Sp\$WBS - 997\$ \$Sp\$WBS - 998\$ \$Sp\$WBS - 999\$ \$Sp\$WBS - 1000\$ \$Sp\$WBS - 1001\$ \$Sp\$WBS - 1002\$ \$Sp\$WBS - 1003\$ \$Sp\$WBS - 1004\$ \$Sp\$WBS - 1005\$ \$Sp\$WBS - 1006\$ \$Sp\$WBS - 1007\$ \$Sp\$WBS - 1008\$ \$Sp\$WBS - 1009\$ \$Sp\$WBS - 1010\$ \$Sp\$WBS - 1011\$ \$Sp\$WBS - 1012\$ \$Sp\$WBS - 1013\$ \$Sp\$WBS - 1014\$ \$Sp\$WBS - 1015\$ \$Sp\$WBS - 1016\$ \$Sp\$WBS - 1017\$ \$Sp\$WBS - 1018\$ \$Sp\$WBS - 1019\$ \$Sp\$WBS - 102

The stratification, of the parts and of the single materials for the families of *Walls*, *Floors*, *Ceilings* and *Roofs* can also be managed by updating the schedules and the master data of the materials in Revit

A MEASUREMENTS by FAMILY

FAMILY: Walls Basic Wall: CW 102-50-140p

| CODE | DESCRIPTION | MEASUREMENT |
|---------|---|------------------------|
| 002.005 | Facing masonry, thickness equal to a head, m... | Frm-EP-IdMat(\$1263\$) |
| 006.003 | Expanded polystyrene extruded with only air in ... | Frm-EP-IdMat(\$1269\$) |
| 015.052 | Vapour retarder, membrane | Frm-EP-IdMat(\$1268\$) |
| 021.003 | Cementitious concrete of class Rck 250 prepa... | Frm-EP-IdMat(\$1246\$) |
| 008.003 | Sound-absorbing interior finishing plaster based... | Frm-EP-IdMat(\$568\$) |

"Drag and Drop" one EP voice entry from Office to add a new Measurement to the family

MEASUREMENT

Name: Frm-EP-IdMat(\$1246\$) Single Row:

Note: Strato n° 4 di 5 con spessore di 0,14 cm su 0,304 cm in totale Positive:

VOICE OF PRICE LIST

Code: MEP Synthetic Short Extended Enlarge

021.003 P Cementitious concrete of class Rck 250 prepared with cement type 325 and aggregates of suitable particle size Un.Meas: m3 Price: 156,64

ROW of MEASUREMENT

Description: I (\$NMat\$) = Concrete Masonry Units P

Equal parts: = NET calculated value P

Length: P

Width: P

H/Weight: P

WBS coding: Not Assigned P

Super Categories: None P

Categories: None P

Sub Categories: None P

Apply to Phase (Super Categories): ☒ Construction/Creation ☐ Demolition

Select the part to compute the NET VOLUME - (\$VoI\$)

----- OUTSIDE of the wall -----

| | |
|--|---------|
| 1 - Brick, Common - Finish1 | (0,102) |
| 2 - Cavity Fill - Insulation | (0,05) |
| 3 - Vapour Retarder - Membrane | (0) |
| 4 - Concrete Masonry Units - Structure | (0,14) |
| 5 - Gypsum Wall Board - Finish2 | (0,012) |

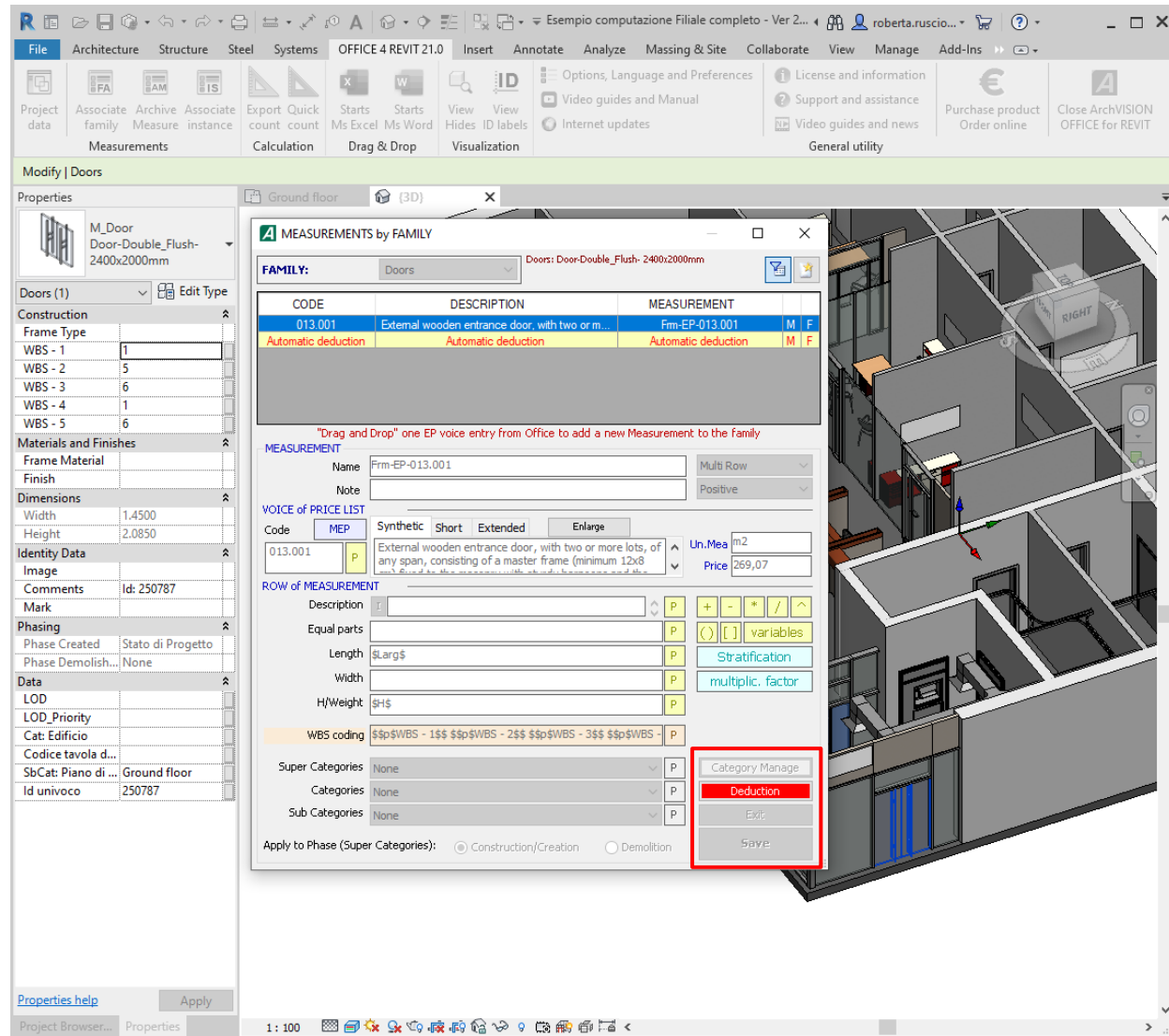
----- INSIDE of the wall -----

| | | | | | | | | | | | | | |
|-----------------------------------|---------------------|------------------|---------|--------|------|---------|--------------------|--------|----|------|--|---------|--|
| CW 102-50-140p | | | | | | | | | | | | | |
| Level 1 | | | | | | | | | | | | | |
| Basic Wall | CW 102-50-140p | Brick, Common | Level 1 | 297468 | 1263 | 002.005 | Facing masonry, th | 42,98 | m3 | None | | Level 1 | |
| Basic Wall | CW 102-50-140p | Brick, Common | Level 1 | 297719 | 1263 | 002.005 | Facing masonry, th | 42,98 | m3 | None | | Level 1 | |
| Basic Wall | CW 102-50-140p | Brick, Common | Level 1 | 297888 | 1263 | 002.005 | Facing masonry, th | 42,98 | m3 | None | | Level 1 | |
| Basic Wall | CW 102-50-140p | Cavity Fill | Level 1 | 297468 | 1269 | 006.003 | Expanded polystyr | 25,00 | m3 | None | | Level 1 | |
| Basic Wall | CW 102-50-140p | Cavity Fill | Level 1 | 297719 | 1269 | 006.003 | Expanded polystyr | 25,00 | m3 | None | | Level 1 | |
| Basic Wall | CW 102-50-140p | Cavity Fill | Level 1 | 297888 | 1269 | 006.003 | Expanded polystyr | 25,00 | m3 | None | | Level 1 | |
| Basic Wall | CW 102-50-140p | Concrete Masonry | Level 1 | 297468 | 1246 | 021.003 | Cementitious concr | 156,64 | m3 | None | | Level 1 | |
| Basic Wall | CW 102-50-140p | Concrete Masonry | Level 1 | 297719 | 1246 | 021.003 | Cementitious concr | 156,64 | m3 | None | | Level 1 | |
| Basic Wall | CW 102-50-140p | Concrete Masonry | Level 1 | 297888 | 1246 | 021.003 | Cementitious concr | 156,64 | m3 | None | | Level 1 | |
| Basic Wall | CW 102-50-140p | Gypsum Wall Boar | Level 1 | 297468 | 568 | 008.003 | Sound-absorbing i | 11,78 | m3 | None | | Level 1 | |
| Basic Wall | CW 102-50-140p | Gypsum Wall Boar | Level 1 | 297719 | 568 | 008.003 | Sound-absorbing i | 11,78 | m3 | None | | Level 1 | |
| Basic Wall | CW 102-50-140p | Gypsum Wall Boar | Level 1 | 297888 | 568 | 008.003 | Sound-absorbing i | 11,78 | m3 | None | | Level 1 | |
| Basic Wall | CW 102-50-140p | Vapour Retarder | Level 1 | 297468 | 1268 | 006.014 | Vapour retarder m | 2,30 | m2 | None | | Level 1 | |
| Basic Wall | CW 102-50-140p | Vapour Retarder | Level 1 | 297719 | 1268 | 006.014 | Vapour retarder m | 2,30 | m2 | None | | Level 1 | |
| Basic Wall | CW 102-50-140p | Vapour Retarder | Level 1 | 297888 | 1268 | 006.014 | Vapour retarder m | 2,30 | m2 | None | | Level 1 | |
| Level 1: 15 | | | | | | | | | | | | | |
| : 15 | | | | | | | | | | | | | |
| CW 102-50-140p: 15 | | | | | | | | | | | | | |
| Interior - 138mm Partition (1-hr) | | | | | | | | | | | | | |
| Level 1 | | | | | | | | | | | | | |
| Basic Wall | Interior - 138mm Pa | Gypsum Wall Boar | Level 1 | 310433 | 568 | 008.003 | Sound-absorbing i | 11,78 | m3 | None | | Level 1 | |
| Basic Wall | Interior - 138mm Pa | Gypsum Wall Boar | Level 1 | 310529 | 568 | 008.003 | Sound-absorbing i | 11,78 | m3 | None | | Level 1 | |
| Basic Wall | Interior - 138mm Pa | Gypsum Wall Boar | Level 1 | 310693 | 568 | 008.003 | Sound-absorbing i | 11,78 | m3 | None | | Level 1 | |
| Basic Wall | Interior - 138mm Pa | Gypsum Wall Boar | Level 1 | 364770 | 568 | 008.003 | Sound-absorbing i | 11,78 | m3 | None | | Level 1 | |
| Basic Wall | Interior - 138mm Pa | Gypsum Wall Boar | Level 1 | 364929 | 568 | 008.003 | Sound-absorbing i | 11,78 | m3 | None | | Level 1 | |
| Basic Wall | Interior - 138mm Pa | Gypsum Wall Boar | Level 1 | 365425 | 568 | 008.003 | Sound-absorbing i | 11,78 | m3 | None | | Level 1 | |
| Basic Wall | Interior - 138mm Pa | Gypsum Wall Boar | Level 1 | 365575 | 568 | 008.003 | Sound-absorbing i | 11,78 | m3 | None | | Level 1 | |
| Basic Wall | Interior - 138mm Pa | Gypsum Wall Boar | Level 1 | 365665 | 568 | 008.003 | Sound-absorbing i | 11,78 | m3 | None | | Level 1 | |
| Basic Wall | Interior - 138mm Pa | Gypsum Wall Boar | Level 1 | 365774 | 568 | 008.003 | Sound-absorbing i | 11,78 | m3 | None | | Level 1 | |

ArchVISION OFFICE for REVIT generates and updates complete **material schedules** showing the *unique ID of each computed entity, the unique ID of each material associated with it* with all the details of the associated PL item (code) and taken from the price list with area, volume and length of each layer.

The schedules thus created are available for layered families such as Walls, Floors, Roofs and Ceilings

Total volume management including dead freight is available (Automatic deduction)



ArchVISION OFFICE for REVIT 201.0

Modify | Doors

Properties

M_Door-Curtain-Wall-Double-Storefront

Doors (1)

Construction

Swing Angle: 90.00°

Frame Type

Text

WBS_01: 5

WBS_02: 5

WBS_03: 5

WBS_04: 5

WBS_05: 5

Materials and Finishes

Frame Material

Finish

Dimensions

Width: 1463.1

Height: 2325.0

Identity Data

Image

Comments: Id: 310055

Mark

Phasing

Phase Created: Phase 1

Phase Demolished: None

Data

SbCat: Piano di riferimento: Level 1

Id univoco: 310055

Cat: Edificio

Codice tavola di riferime...

Other

Panel Width: 731.5

MEASUREMENTS by FAMILY

FAMILY: Doors

CODE DESCRIPTION MEASUREMENT

038.001 Office internal curtain wall, from master frame 9... Frm-EP-038.001 M F

"Drag and Drop" one EP voice entry from Office to add a new Measurement to the family

MEASUREMENT

Name: Frm-EP-038.001

Note

VOICE OF PRICE LIST

Code: MEP Synthetic Short Extended Enlarge

038.001 Office internal curtain wall, from master frame 9 x 4.5 cm knife; frame-reinforced and divided into a square, formed

Un.Me: m2

Price: 100,00

ROW OF MEASUREMENT

Description: I \$NoneFam\$

Equal parts: \$Area\$

Length

Width

H/Weight

WBS coding: \$\$p\$WBS_01\$\$ \$p\$WBS_02\$\$ \$p\$WBS_03\$\$ \$p\$WBS_04\$

Super Categories: Internal furniture

Categories: Interiors

Sub Categories: Finished Ground Floor, Sub Category Project

Apply to Phase (Super Categories): ☒ Construction/Creation ☐ Demolition

Warning!

The 'Revit' values of the selected parameters will not be automatically converted into meters add, if necessary, a division factor, for example in mm: (\$p\$Length\$/ 1000)

INSTANCE parameters

| Parameter | Example value |
|-----------------------------|--|
| Area | 3 m² |
| Category | Doors |
| Comments | Id: 310055 |
| Design Option | -1 |
| Family | M_Door-Curtain-Wall-Double-Storefront |
| Family and Type | M_Door-Curtain-Wall-Double-Storefront: M_Door-Curtain-Wall-Double-Storefront |
| Height | 2325 |
| Host Id | 310055 |
| Id univoco | 310055 |
| Image | <None> |
| Level | Level 1 |
| Panel Width | 732 |
| Phase Created | Phase 1 |
| Phase Demolished | None |
| SbCat: Piano di riferimento | Level 1 |
| Swing Angle | 90.00° |
| Type | M_Door-Curtain-Wall-Double-Storefront |
| Type Id | 317317 |
| Volume | 0.08 m³ |
| WBS_01 | 5 |
| WBS_02 | 5 |
| WBS_03 | 5 |

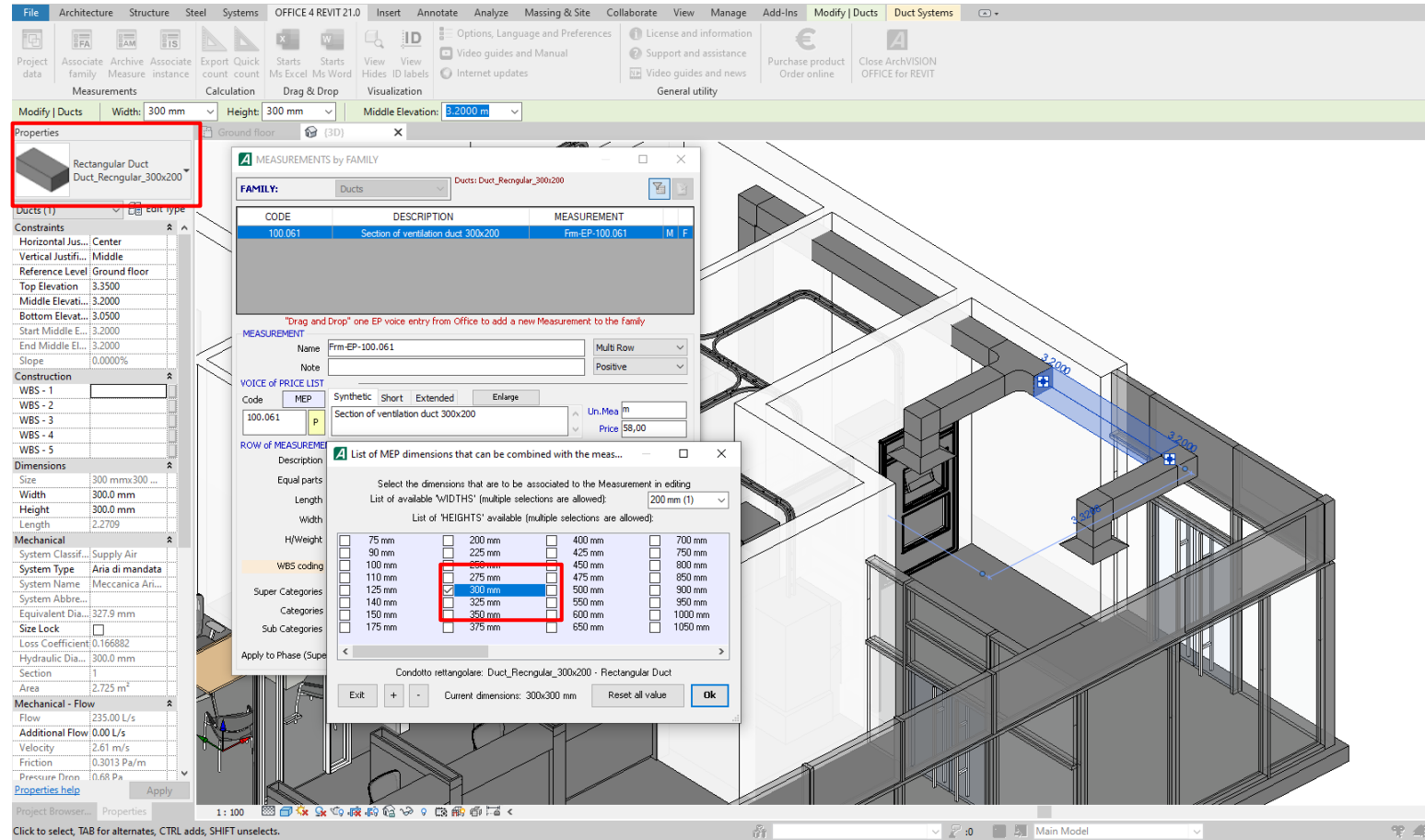
Apply in RANGE from the value (Min): 2325 to the value (Max): 2325

☒ Exclude the parameters from the list without any value

Found 25 Instance parameters and 31 Type

ArchVISION OFFICE for REVIT allows the possible association of PL entries to families by filtering and binding them according to a specific range of values in the instance parameters. (dimensions)

In detail, it is possible to select distinct width and height of the section of ducts, walkways, pipes by blocking and constraining the selected PL item available in a very similar way also on the diameters of the pipes.



ArchVISION OFFICE for REVIT, also allows quantity take-off organized in **WBS Multi-level coding** by selecting the structure and the value **directly from the customized parameters** in existing Revit projects.

ArchVISION OFFICE for REVIT 21.0 interface showing the WBS Multi-level coding process.

Properties Panel (Left): ATM - _Wall_Mounted_with_D...
Generic Models (1) Edit Type
Constraints: Level: Ground floor, Elevation from ...: 0.4445
Construction: WBS - 1: 6, WBS - 2: 4, WBS - 3: 2, WBS - 4: 2, WBS - 5: 1
Dimensions: volume: 1.437 m
Identity Data: Image, Comments: Id: 230367
Mark
Phasing: Phase Created: Stato di Progetto, Phase Demolish...: None
Data: LOD, LOD_Priority, Cat: Edificio, Codice tavola d..., SbCat: Piano di ..., Ground floor, Id univoco: 230367

MEASUREMENTS by FAMILY (Center):
FAMILY: Generic Models
Generic Models: ATM - _Wall_Mounted_with_Depository_3731
CODE DESCRIPTION MEASUREMENT
100.001 Internal ATMs for branches complete with labo... Frm-EP-100.001 M F
"Drag and Drop" one EP voice entry from Office to add a new Measurement to the family
MEASUREMENT: Name: Frm-EP-100.001, Note: Multi Row
VOICE of PRICE LIST: Code: MEP, Synthetic, Short, Extended, Enlarge
100.001 P Internal ATMs for branches complete with labor installation
ROW of MEASUREMENT: Description: I, Equal parts: 1, Length, Width, H/Weight
WBS coding: \$p\$WBS - 1\$ \$p\$WBS - 2\$ \$p\$WBS - 3\$ \$p\$WBS - 4\$ \$p\$WBS - 5\$ P
Super Categories: None, Categories: None, Sub Categories: None
Apply to Phase (Super Categories): ☒ Construction/Creation ☐ Demolition

List of Instance and Type parameters available (Warning):
The 'Revit' values of the selected parameters will not be automatically converted into meters add, if necessary, a division factor, for example in mm: (\$p\$Length\$/ 1000)
INSTANCE parameters TYPE parameters
Parameter Example value
Phase Demolished None
SbCat: Piano di riferimento Ground floor
Type ATM - _Wall_Mounted_with_Depository_3731
Type Id 229269
Volume 1.46 m³
WBS - 1 6
WBS - 2 4
WBS - 3 2
WBS - 4 2
WBS - 5 1
☒ Exclude the parameters from the list without any value
Found 22 Instance parameters and 13 Type

Management of WBS coding referred to Revit parameters:
Select the Revit parameters in chronological order to compose the WBS code
1* \$p\$WBS - 1\$ 6 X
2* \$p\$WBS - 2\$ 4 X
3* \$p\$WBS - 3\$ 2 X
4* \$p\$WBS - 4\$ 2 X
5* \$p\$Phase Created\$ Stato di Progetto X
6* X
Preview: 6.4.2.2 Stato di Progetto
Examples: 1.2.3.4.5 Fire extinguishers or 3.4.1.7 - Excavations
Exit Save

ArchVISION OFFICE for REVIT allows the calculation of structures organized by **Super Categories**, **Categories** and **Sub Categories** and their structure can be managed through special windows and dedicated archives.

A MEASUREMENTS by FAMILY

FAMILY: Walls Basic Wall: CW 102-43-140p

| CODE | DESCRIPTION | MEASUREMENT | | |
|---------|---|----------------|---|---|
| 002.005 | Facing masonry, thickness equal to a head, m... | Frm-EP-002.005 | M | F |
| 006.003 | Expanded polystyrene extruded with only air in ... | Frm-EP-006.003 | M | F |
| 021.005 | Straight or ribbed formworks of any type for cas... | Frm-EP-021.005 | M | F |

"Drag and Drop" one EP voice entry from Office to add a new Measurement to the family

MEASUREMENT

Name: Frm-EP-021.005 Multi Row: ☐ Note: Positive: ☐

VOICE OF PRICE LIST

Code: MEP Synthetic Short Extended Enlarge

021.005 P Straight or ribbed formworks of any type for casting of simple or reinforced concrete conglomerates including reinforcement, release, stripping, shoring and support

Un.Meas: m2 Price: 15,17

ROW of MEASUREMENT

Description: I \$NomeFam\$ P + - * / ^

Equal parts: P () [] variables

Length: \$Lung\$ P Stratification

Width: 100 P multiplic. factor

H/Weight: \$H\$ P

WBS coding: Not Assigned P

Super Categories: Tamponade Walls P Category Manage

Categories: Whole building P

Sub Categories: Finished Ground Plan, Prog Sub Category P

Apply to Phase (Super Categories): ☒ Construction/Creation ☐ Demolition

Save

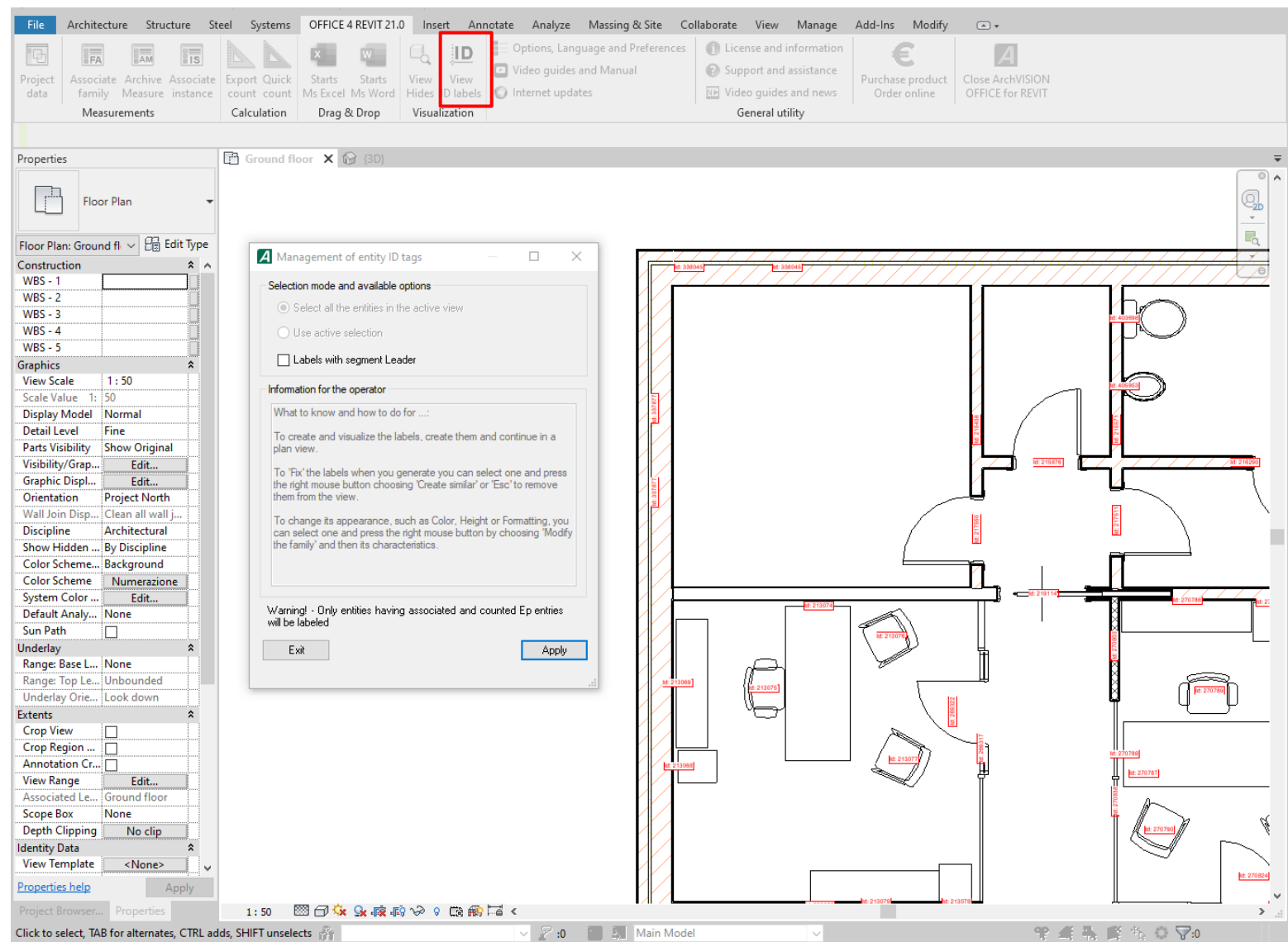
A List "Super Categories" available

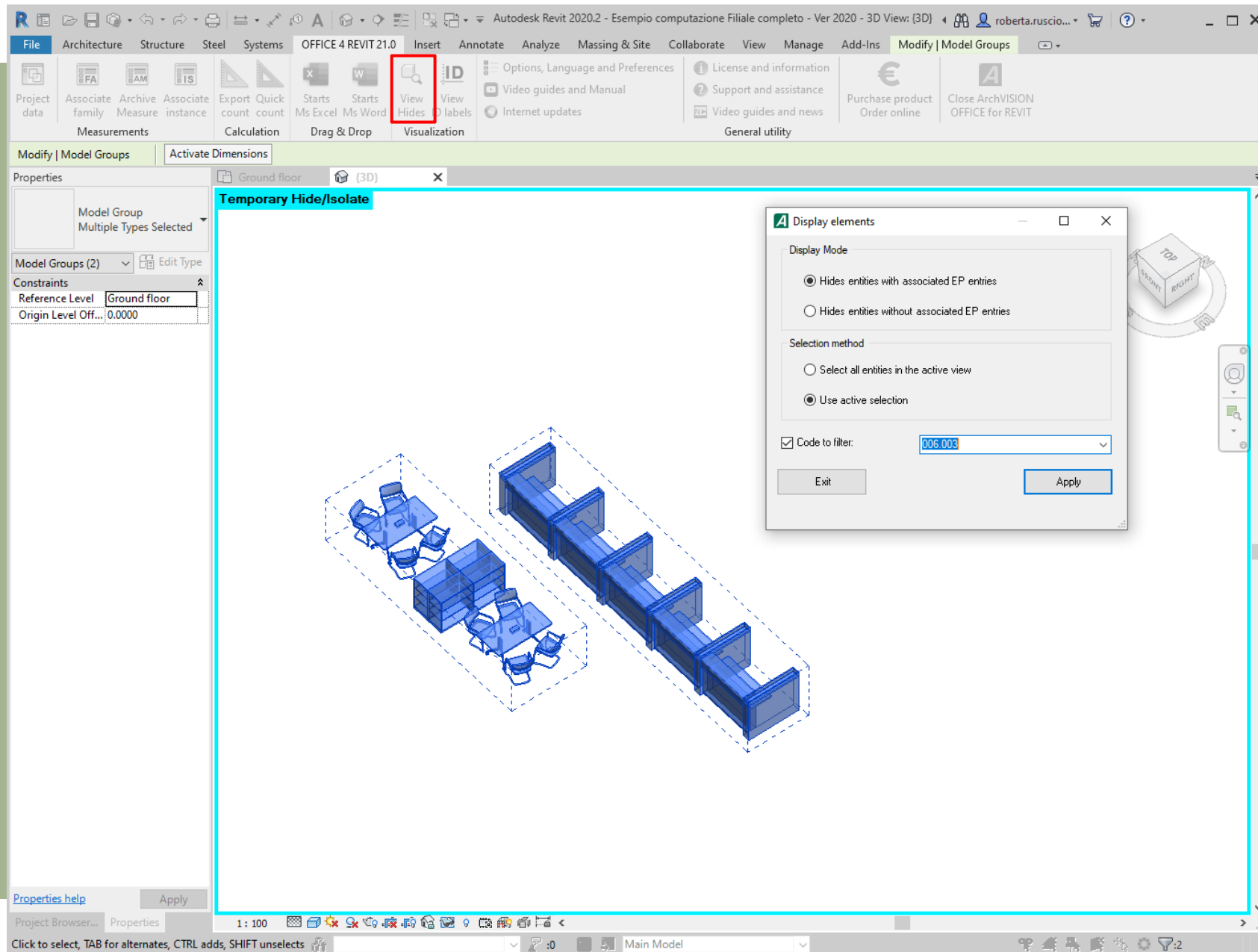
Active CAT file: C:\MCS\ArchVISION OFFICE for REVIT\ArchVISION OFFICE for REVIT.d

Type to manage: ☐ WBS ☒ Super Categories ☐ Categories ☐ Sub Categories

| Id | List of entries "Super Categories" available |
|----|--|
| 12 | Demolitions |
| 13 | Construction site dismantling |
| 14 | Waterproofing |
| 15 | Burglar and burglar alarm systems |
| 16 | Fire-fighting systems - central |
| 17 | Fire-fighting systems - fire extinguishers |
| 18 | Fire-fighting systems - reel |
| 19 | Fire-fighting systems - net |
| 2 | Interior furnishings |
| 20 | Building automation systems - electrical systems |
| 21 | Building automation systems - mechanical engineering |
| 22 | Gas distribution systems |
| 23 | Emergency lighting systems |
| 24 | Irrigation systems |
| 25 | Heating and central heating systems |
| 26 | Heating and cooling systems -acs production |
| 27 | Heating and distribution systems |
| 28 | Lifting systems |
| 29 | Central air treatment plants |
| 3 | Urban furniture |
| 30 | Air treatment plants - distribution network |
| 31 | Electrical installations - MV / LV cabin |

Exit Add Edit Delete Reset





It is always possible to **hide** or **display** the families or instances that have already been assigned to one or more voices of PL (Price List) and therefore computable and it is possible to filter the entities also by code.

ArchVISION OFFICE for REVIT - Configure the desired export mode [X]

Select the desired export mode:

☐ Update of the calculation keeping any Measurements already present in the existing calculation
This option leaves unchanged any Measurements introduced manually in the existing calculation preserving the content

☒ Total replacement of the previous export
IN THE PRESENCE OF AUTOMATIC DEDUCTIONS THE UPDATE OF THE DUTIES IS NOT AVAILABLE (Remove them from the measurement file)

Select the desired export order (Optional prefix in the management of Category Filters in to Office)

☒ Include the management of Category Filters in the calculation ☐ Excludes prefix 'Demolished' or 'Built' in phases

☐ No prefix ☒ Level - Phase ☐ Phase - Level ☐ Level ☐ Fase Place in: Super Categories

☐ Include in the Categories instance parameter 'Cat: Edificio' ☐ Include in the Sub Categories instance parameter 'SbCat: Piano di riferimento' ☐ Excludes the term 'None'

Management of stratification (Walls, Floors, Roofs and Ceilings)

☐ Include and compute also the stratification (Materials) for the following system families: ☐ Walls ☐ Floors ☐ Roofs ☐ Ceilings

Configuration of the computed generated

☒ File MS Excel ☐ File MS Word ☐ Breve ☐ Estesa Maximum number of backups of the file: 1

Path and file name XLSX generated N:

☐ Enable MEP filter ☒ Include the multiset WBS structure

☒ REVIT FIND - Highlight selected entities in Revit

Exit Update 'Unique IDs' of selected entities and related materials Continue

It is possible to filter the quantity take-off generated also by **Work phases** and **Plans** (Levels in Revit) by placing the computed elements in the appropriate **Super Categories, Categories or Sub Categories**.

ArchVISION OFFICE for REVIT generates or updates the calculation by detecting changes in the instances already calculated and allows them to be updated, preserving the measurements entered manually by the operator in the existing calculation, allows the activation of the **WBS Multi-level** management the management of **Super Categories**, of the **Categories** and **Sub Categories**, it is possible to filter the calculations by **Phases** and **Levels** and enable the calculation of **MEP** elements

Features summary

Compatible with **Revit from version 2018 up to 2022** and **MS Office (Excel and Word) from version 2007 (and later versions) up to the latest Office 365**.

49 global parameters shared by instance, types and materials including the information of the associated Price List items allowing the creation of customized schedules complete with all billing information.

Possibility of working in a team with full compatibility of the Work-sharing methodology and sharing of the measurements of the price lists of the billing information and of the bills of quantities made in a team also in the **cloud**, a very convenient working method even for individual professionals.

Management of materials and individual layers present in walls, floors, roofs and ceilings with the association to each material of the Price List items associated with it and available in Revit with activation of the **Material Schedules** containing the ID of the single instance and the ID of the single material .

Filter by Code in temporary views by precisely hiding the entities already associated with certain Price List items.

Quick Compute to update the last computation configured with a click.

Revit FIND to select a row of the bill (Excel or Word) and highlight its instance in Revit.

Features summary

Complete management of **customized global parameters** that can also be used in formulas and linked together in even complex combinations (sheet metal development, formwork, special processes, etc.).

Management of topographic surfaces with **calculation of excavation and fill**.

Management of grooves and extrusions for walls and **sloped floors** (screeds).

Complete management of **structural and MEP elements** including electrical elements.

Automatic deduction (configurable according to the measures) of doors and windows.

Possibility to compute MEP elements by associating different **codes according to their size**.

Possibility of calculating, for the same family, several entities with fixed codes **according to their instance parameters and their size**.

Automatic labeling of computed instances for immediate comparisons between computations and tables.

Management of the single **Parts** of the **Paintings** of the **Nested families**, of the **Insulations** and of the Groups.

Licenses available in Subscription (rental plans) dynamic, modern and very versatile and manageable with an **advanced technology in the Cloud** and therefore easily shareable on multiple locations.

Available in professional version for **free evaluation**, educational and for resellers and partners

Compatibility

Autodesk Revit starting from the 2018 version up to the latest 2022 in Italian, English and Spanish

MS Office from 2007 up to the latest Office 365 version in Italian, English, Spanish, French and German

MS Windows 7, 8.1 and 10 in Italian, English, Spanish, French and German

ArchVISION OFFICE for REVIT is available with an Italian, English, Spanish, French and German interface.

Note:

It does not work with Revit LT.

No resources and hardware equipment greater than those necessary for Revit operation are required

Free space required at the time of installation 700 Mbytes

MCS Software commercial policy and transparency

Each license includes:

Telephone, e-mail or remote connection assistance for contextual online support reserved for users covered by an active rental plan.

Intermediate and release updates for rental licenses of any updates (provided they are issued and covered by the term of the rental plan)

ArchVISION OFFICE for REVIT in free evaluation version calculates the first 60 selected entities for 10 days (duration and quantity can be modified as needed)

ARCHVISION

OFFICE FOR REVIT

Distribuzione internazionale



Via al Mulino, 22
6814 Cadempino - Svizzera
Tel. +41 22 518.00.16
international@mcs-software.it
bim.mcs-software.it/en

In-depth video guides and tutorials are available on the YouTube channel:

www.youtube.com/user/McsSoftwareSrl

Available on the Autodesk store at the following address:

<https://apps.autodesk.com/>

Complete availability for remote connections and for live presentations at agreed times
without any commitment

MCS Software is available in evaluating the development of customized solutions